

# FREEBSD 6.2

Cihan Kömeçoğlu

Enderunix Akademi

[cihan@akademi.enderunix.org](mailto:cihan@akademi.enderunix.org)



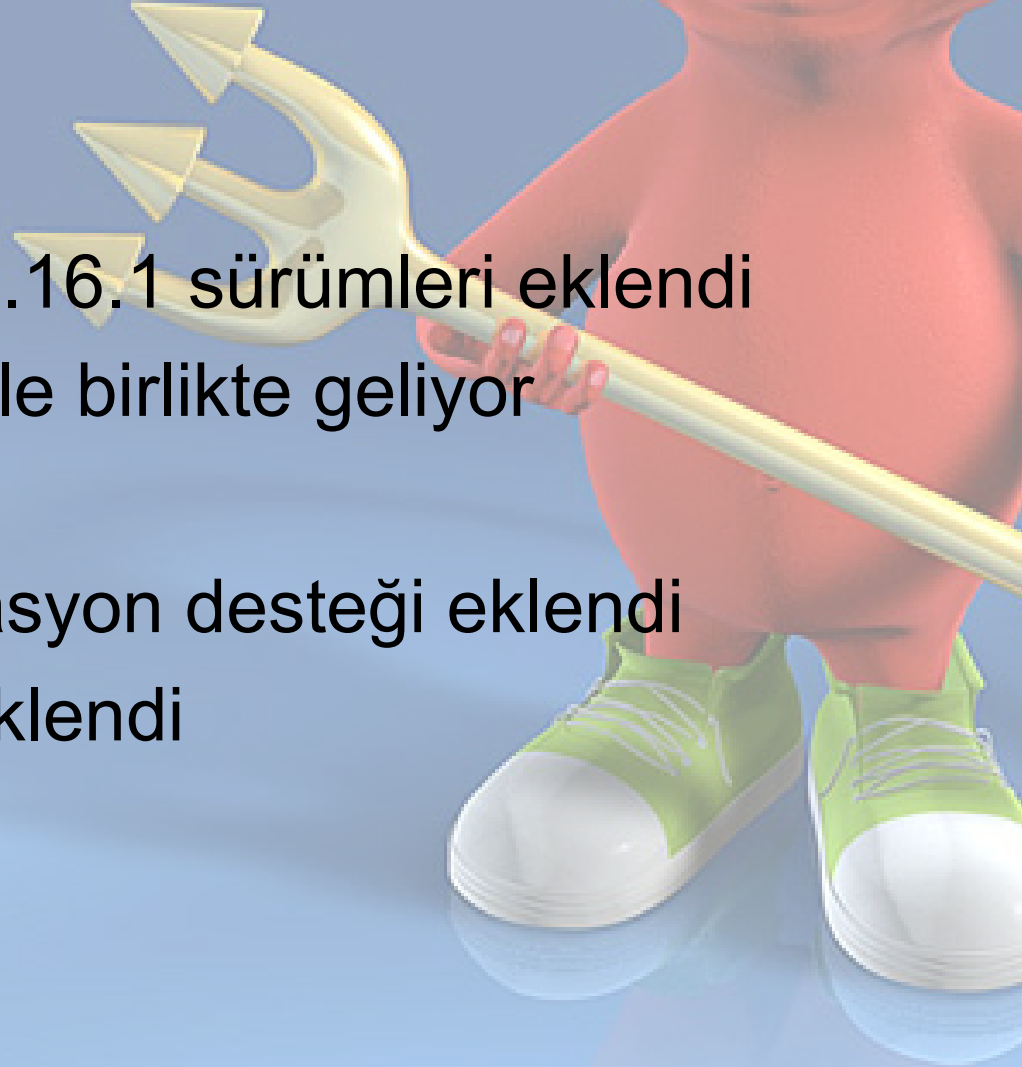
# FreeBSD 6.2 Kurulum ve Yenilikler

- Sunum Özeti:
- FreeBSD 6.2 kurulumu
- FreeBSD 6.2 ile gelen yenilikler

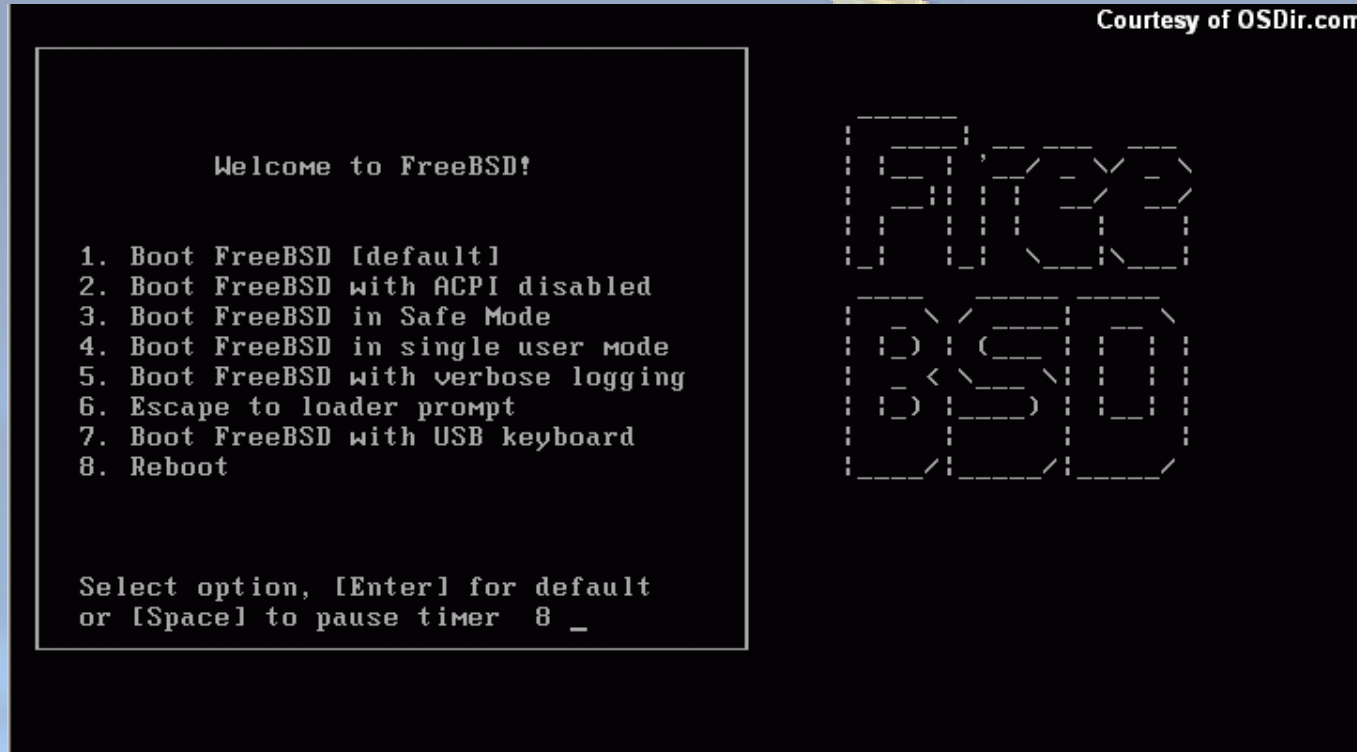


# FreeBSD 6.2: Yenilikler

- Kde 3.5.4 , Gnome 2.16.1 sürümleri eklendi
- Csup , CVSup client ile birlikte geliyor
- IPFW yenilendi.
- Sysfs için linux emulasyon desteği eklendi
- BIND 9.3.3 sürümü eklendi



# FreeBSD boot



- Boot işleminden sonraki seçenekler

# Kurulum

```

                                     sysinstall Main Menu
Welcome to the FreeBSD installation and configuration tool. Please
select one of the options below by using the arrow keys or typing the
first character of the option name you're interested in. Invoke an
option with [SPACE] or [ENTER]. To exit, use [TAB] to move to Exit.

  Usage      Quick start - How to use this menu system
  Standard   Begin a standard installation (recommended)
  Express    Begin a quick installation (for experts)
  Custom     Begin a custom installation (for experts)
  Configure  Do post-install configuration of FreeBSD
  Doc        Installation instructions, README, etc.
  Keymap     Select keyboard type
  Options    View/Set various installation options
  Fixit     Repair mode with CDROM/DVD/floppy or start shell
  Upgrade    Upgrade an existing system
  Load Config Load default install configuration
  Index      Glossary of functions

                                     [ Select ]   X Exit Install
                                     [ Press F1 for Installation Guide ]

```

- Kurulum seçenekleri, ayarlar, döküman gibi seçenekler bulunur.

# FDISK

```
Disk name:      ad0                      FDISK Par Courtesy of OSDir.com
DISK Geometry: 10402 cyls/16 heads/63 sectors = 10485216 sectors (5119MB)

Offset          Size(ST)          End          Name  PType      Desc  Subtype  Flags
      0             63             62           -     12      unused     0
      63      10485153      10485215    ad0s1   8      freebsd    165
10485216         544      10485759    -     12      unused     0

The following commands are supported (in upper or lower case):

A = Use Entire Disk   G = set Drive Geometry   C = Create Slice   F = 'DD' mode
D = Delete Slice     Z = Toggle Size Units    S = Set Bootable  : = Wizard M.
T = Change Type      U = Undo All Changes     Q = Finish

Use F1 or ? to get more help, arrow keys to select.
█
```

- Fdisk ile partition'lar oluşturulur

# Boot Yöneticisinin kurulumu

Courtesy of OSDir.com

## Install Boot Manager for drive ad0?

FreeBSD comes with a boot selector that allows you to easily select between FreeBSD and any other operating systems on your machine at boot time. If you have more than one drive and want to boot from the second one, the boot selector will also make it possible to do so (limitations in the PC BIOS usually prevent this otherwise). If you do not want a boot selector, or wish to replace an existing one, select "standard". If you would prefer your Master Boot Record to remain untouched then select "None".

NOTE: PC-DOS users will almost certainly require "None"!

<b>BootMgr</b>	Install the FreeBSD Boot Manager
<b>Standard</b>	Install a standard MBR (no boot manager)
<b>None</b>	Leave the Master Boot Record untouched

[ **OK** ] Cancel

[ Press F1 to read about drive setup ]

- Ne tür bir boot yöneticisi kullanılacağı buradan seçilir.



# Dilim Oluřturma

```
FreeBSD Disklabel Editor
Disk: ad0 Partition name: ad0s1 Free: 16514001 blocks (8063MB)
Part Mount Size Newfs Part Mount Size Newfs
-----
Value Required
Please specify the partition size in blocks or append a trailing G for
gigabytes, M for megabytes, or C for cylinders.
16514001 blocks (8063MB) are free.
64M
[ OK ] Cancel
The following commands are valid here (upper or lower case):
C = Create D = Delete M = Mount pt.
N = Newfs Opts Q = Finish S = Toggle SoftUpdates
T = Toggle Newfs U = Undo A = Auto Defaults R = Delete+Merge
Use F1 or ? to get more help, arrow keys to select.
```

- Disklerin Boyutu belirlenirken sayının sonuna G(gigabyte), M(Megabyte) gibi harfler konularak belirlenir

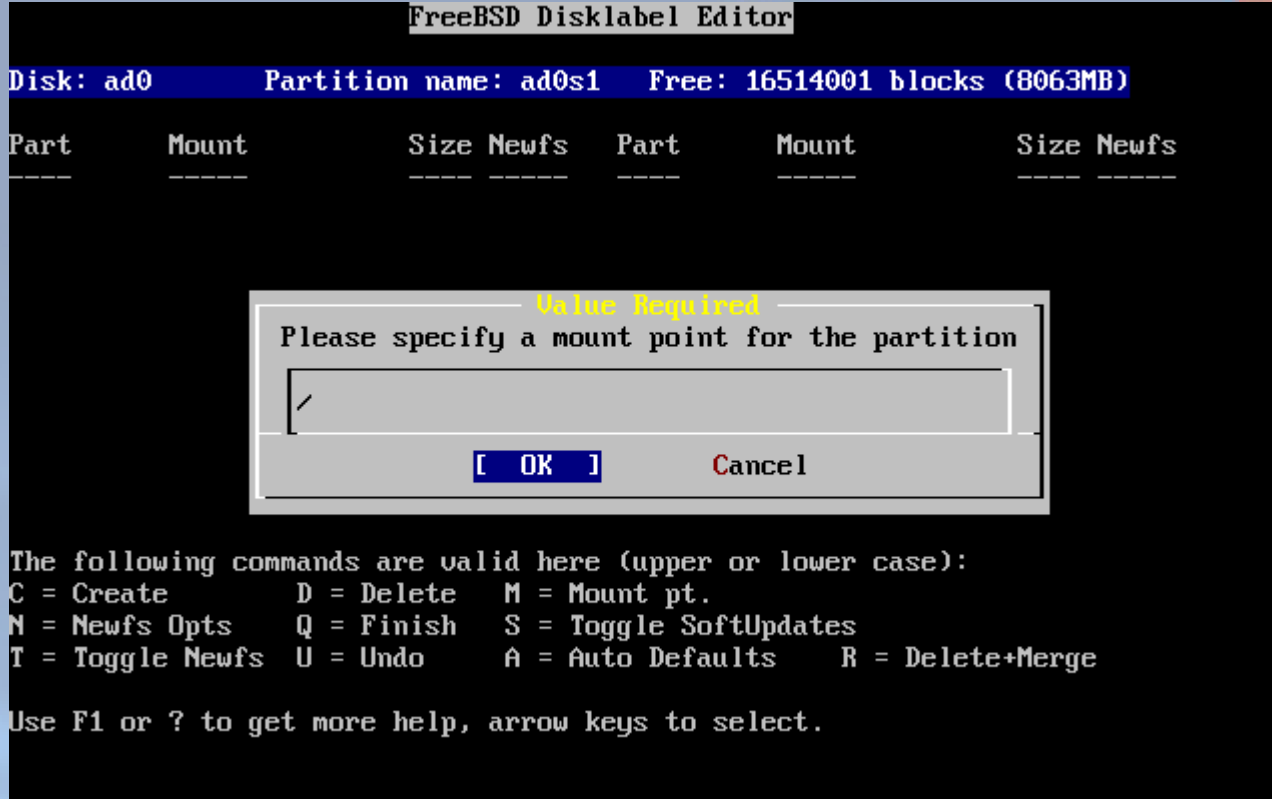


# Bölüm Tipi Seçme

```
FreeBSD Disklabel Editor
Disk: ad0      Partition name: ad0s1  Free: 16514001 blocks (8063MB)
Part          Mount          Size Newfs  Part          Mount          Size Newfs
-----
Please choose a partition type
If you want to use this partition for swap space, select Swap.
If you want to put a filesystem on it, choose FS.
FS  A file system
Swap A swap partition.
[ OK ]  Cancel
The following commands are valid here (upper or lower case):
C = Create      D = Delete    M = Mount pt.
N = Newfs Opts  Q = Finish    S = Toggle SoftUpdates
T = Toggle Newfs U = Undo      A = Auto Defaults  R = Delete+Merge
Use F1 or ? to get more help, arrow keys to select.
```

- Her bir dilim için bir bağlama noktası girilir
- Bir swap bölümü seçilir.

# Bağlama Noktası



- Dilimler için uygun bir bağlama noktası belirlenir.

# Disklabel

```
FreeBSD Disklabel Editor
Disk: ad0      Partition name: ad0s1  Free: 0 blocks (0MB)

Part      Mount          Size Newfs  Part      Mount          Size Newfs
-----
ad0s1a    /              512MB UFS2   Y
ad0s1b    swap          2534MB SWAP
ad0s1d    /var          2048MB UFS2+S Y
ad0s1e    /tmp          1024MB UFS2+S Y
ad0s1f    /usr          143GB  UFS2+S Y

The following commands are valid here (upper or lower case):
C = Create      D = Delete      M = Mount pt.    W = Write
N = Newfs Opts  Q = Finish      S = Toggle SoftUpdates  Z = Custom Newfs
T = Toggle Newfs  U = Undo        A = Auto Defaults    R = Delete+Merge

Use F1 or ? to get more help, arrow keys to select.
```

- Disklabel editörü ile dilimler oluşturulur.

# Distribution Set'lerin Kurulumu

Courtesy of OSDir.com

**Choose Distributions**

As a convenience, we provide several "canned" distribution sets. These select what we consider to be the most reasonable defaults for the type of system in question. If you would prefer to pick and choose the list of distributions yourself, simply select "Custom". You can also pick a canned distribution set and then fine-tune it with the Custom item.

Choose an item by pressing [SPACE] or [ENTER]. When finished, choose the Exit item or move to the OK button with [TAB].

<<< <b>X</b> Exit	<b>Exit this menu (returning to previous)</b>
All	All system sources, binaries and X Window System
Reset	Reset selected distribution list to nothing
[X] 4 Developer	Full sources, binaries and doc but no games
[X] 5 X-Developer	Same as above + X Window System
[X] 6 Kern-Developer	Full binaries and doc, kernel sources only
[X] 7 X-Kern-Developer	Same as above + X Window System
[X] 8 User	Average user - binaries and doc only
↓(+)	

[ **OK** ]      Cancel

[ Press F1 for more information on these options. ]

- En uygun görülen distribution seçilir.

# Port Kurulumu

## User Confirmation Requested

Would you like to install the FreeBSD ports collection?

This will give you ready access to over 4000 ported software packages, at a cost of around 70MB of disk space when "clean" and possibly much more than that if a lot of the distribution tarballs are loaded (unless you have the extra CDs from a FreeBSD CDROM distribution available and can mount it on /cdrom, in which case this is far less of a problem).

The ports collection is a very valuable resource and well worth having on your /usr partition, so it is advisable to say Yes to this option.

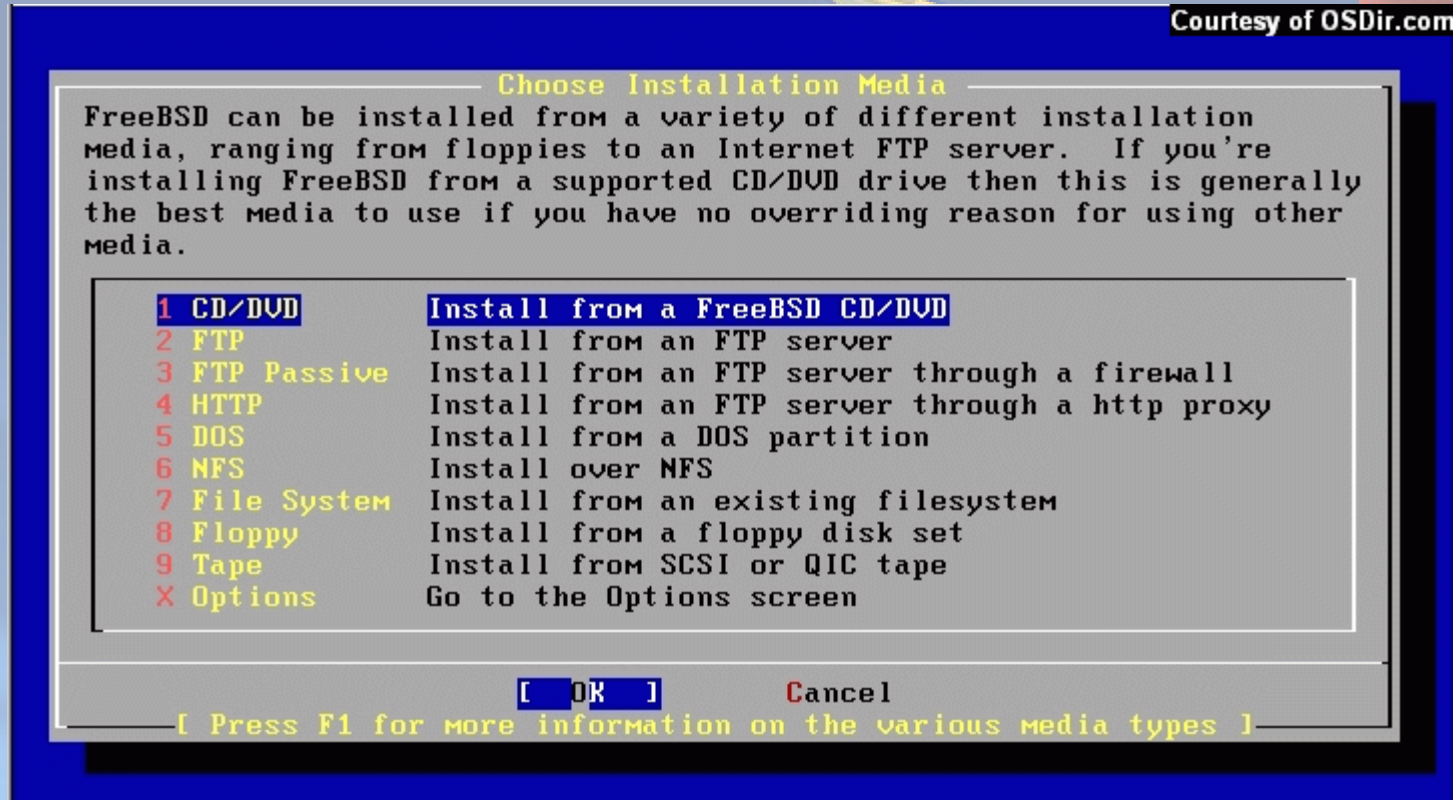
For more information on the ports collection & the latest ports, visit:

<http://www.freebsd.org/ports>

[ Yes ] No

- Portlar ile standart kurulumda bulunmayan paketleri kurabiliriz.

# FreeBSD Kurulum Kaynağı



- Freebsd kurulum dosyalarının bulunduğu kaynak seçilir.

# Ağ Aygıtı Seçimi

## Network interface information required

If you are using PPP over a serial device, as opposed to a direct ethernet connection, then you may first need to dial your Internet Service Provider using the ppp utility we provide for that purpose. If you're using SLIP over a serial device then the expectation is that you have a HARDWIRED connection.

You can also install over a parallel port using a special "laplink" cable to another machine running a fairly recent (2.0R or later) version of FreeBSD.

```
ed0  Novell NE1000/2000; 3C503; NE2000-compatible PCMCIA
sl0  SLIP interface on device /dev/cuaa0 (COM1)
ppp0 PPP interface on device /dev/cuaa0 (COM1)
sl0  SLIP interface on device /dev/cuaa1 (COM2)
ppp0 PPP interface on device /dev/cuaa1 (COM2)
```

[ OK ]

Cancel

[ Press F1 to read network configuration manual ]

- Ağ ayarlarının yapılması istediğiniz aygıt seçilir.



# Ağ Ayarları

User Confirmation Requested

Do you want to try DHCP configuration of the interface?

Yes [ No ]

Network Configuration

Host: k6-2.example.com Domain: example.com

IPv4 Gateway: Name server: 208.163.10.2

Configuration for Interface ed0

IPv4 Address: 192.168.0.1 Netmask: 255.255.255.0

Extra options to ifconfig:

[OK] CANCEL

Select this if you are happy with these settings

- DHCP mevcut ise aygıtta otomatik olarak ip ataması yapılabilir.

# Gateway, Servisler, FTP, NFS

User Confirmation Requested

Do you want this machine to function as a network gateway?

Yes [ No ]

User Confirmation Requested

Do you want to configure inetd and the network services that it provides?

Yes [ No ]

User Confirmation Requested

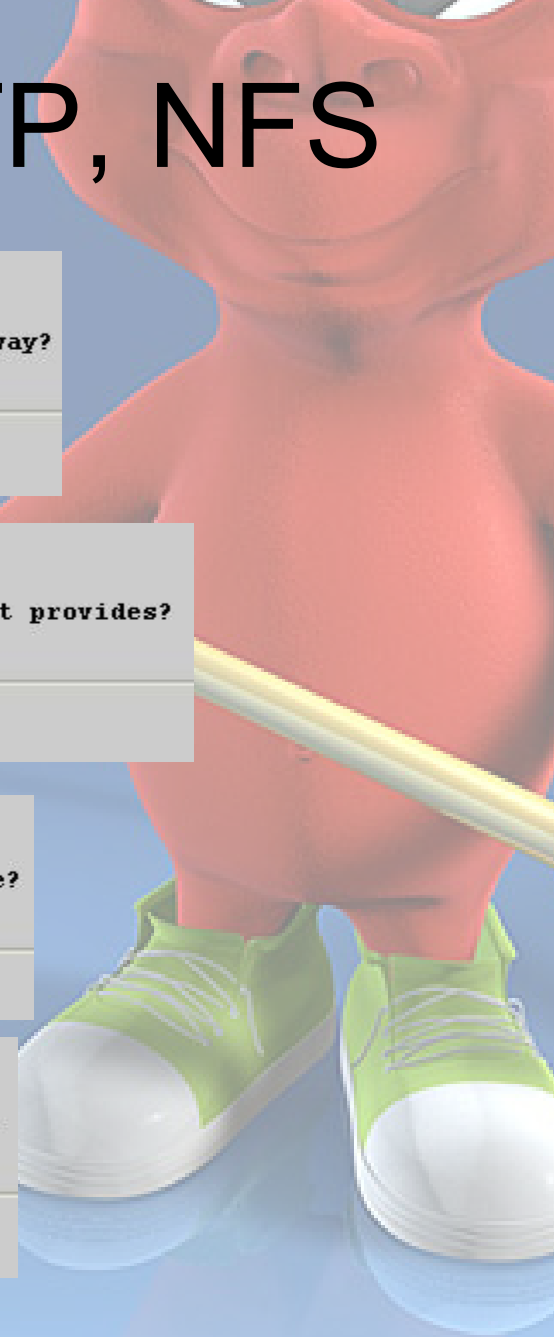
Do you want to have anonymous FTP access to this machine?

Yes [ No ]

User Confirmation Requested

Do you want to configure this machine as an NFS server?

Yes [ No ]



# Linux Uyumluluđu



- “Yes” seçilerek freebsd de linux ikili dosyalarının çalıştırılması için gerekli dosyalar kurulur.

# Paketler

## User Confirmation Requested

The FreeBSD package collection is a collection of hundreds of ready-to-run applications, from text editors to games to WEB servers and more.  
Would you like to browse the collection now?

Yes [ No ]

## Package Selection

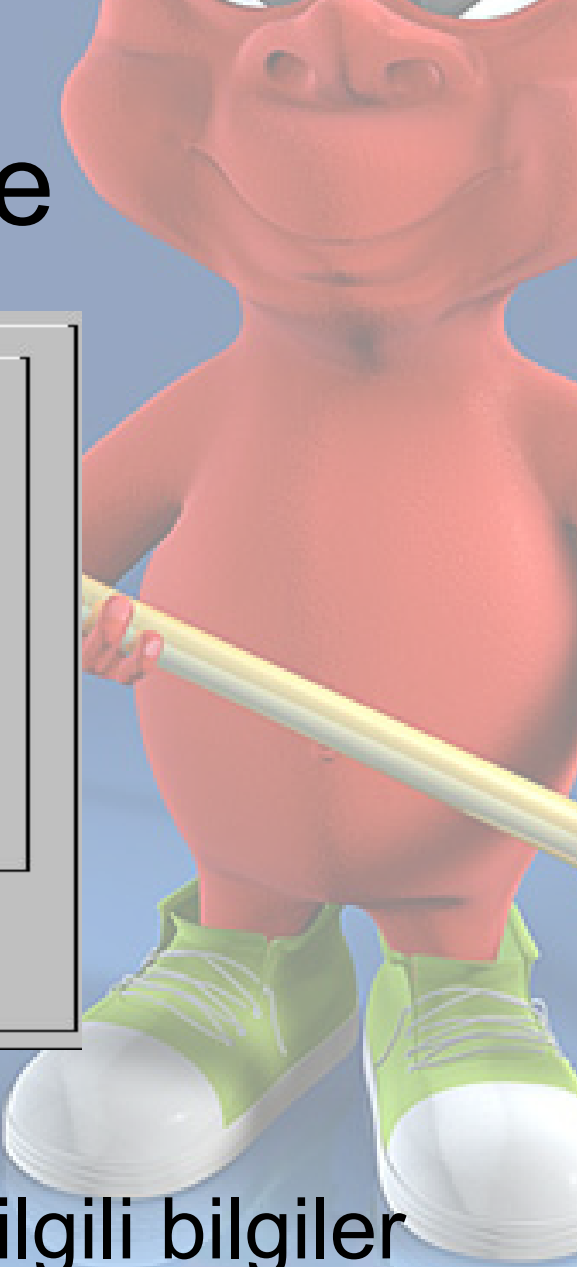
To mark a package, move to it and press SPACE. If the package is already marked, it will be unmarked or deleted (if installed). Items marked with a 'D' are dependencies which will be auto-loaded. To search for a package by name, press ESC. To select a category, press RETURN. NOTE: The All category selection creates a very large submenu! If you select it, please be patient while it comes up.

<b>All</b>	All available packages in all categories.
afterstep	Ports to support the AfterStep window manager.
archivers	Utilities for archiving and unarchiving data.
astro	Applications related to astronomy.
audio	Audio utilities - most require a supported sound card.
benchmarks	Utilities for measuring system performance.
biology	Software related to biology.
cad	Computer Aided Design utilities.
chinese	Ported software for the Chinese market.
comms	Communications utilities.
converters	Format conversion utilities.
databases	Database software.
↓(+)	

[OK] Install

- Kurulmak istenen paketler seçilir.

# Kullanıcı Ekleme



User and Group Management  
Add a new user

Login ID:	UID:	Group:	Password:
<input type="text" value="rpratt"/>	<input type="text" value="1001"/>	<input type="text"/>	<input type="password" value="*****"/>
Full name:		Member groups:	
<input type="text" value="Randy Pratt"/>		<input type="text" value="wheel"/>	
Home directory:	Login shell:		
<input type="text" value="/home/rpratt"/>	<input type="text" value="/usr/local/bin/bash"/>		

- Ekleme istenilen kullanıcı ile ilgili bilgiler girilir.

# Son Adım

- Root kullanıcısı için Őfre girildikten sonra kurulumdan ıkılır.
- Bilgisayar yeniden baŐlatılır.



**SORULAR?**

